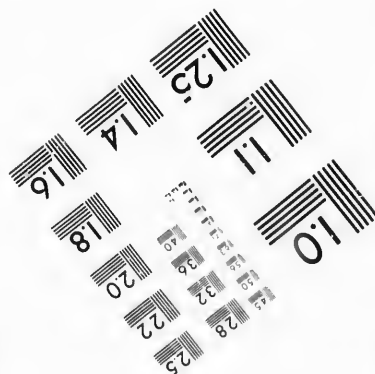
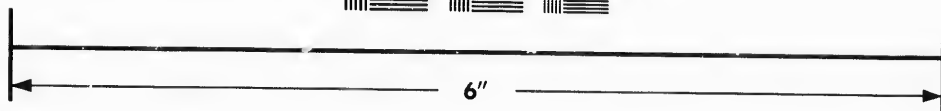
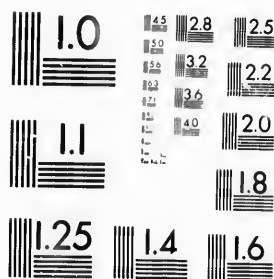
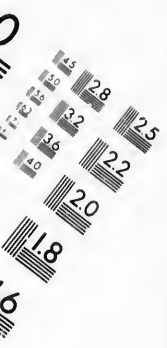


**IMAGE EVALUATION  
TEST TARGET (MT-3)**



**Photographic  
Sciences  
Corporation**

23 WEST MAIN STREET  
WEBSTER, N.Y. 14580  
(716) 872-4503



**CIHM/ICMH  
Microfiche  
Series.**

**CIHM/ICMH  
Collection de  
microfiches.**



Canadian Institute for Historical Microreproductions / Institut canadien de microreproductions historiques



**© 1987**

Technical and Bibliographic Notes/Notes techniques et bibliographiques

The Institute has attempted to obtain the best original copy available for filming. Features of this copy which may be bibliographically unique, which may alter any of the images in the reproduction, or which may significantly change the usual method of filming, are checked below.

L'Institut a microfilmé le meilleur exemplaire qu'il lui a été possible de se procurer. Les détails de cet exemplaire qui sont peut-être uniques du point de vue bibliographique, qui peuvent modifier une image reproduite, ou qui peuvent exiger une modification dans la méthode normale de filmage sont indiqués ci-dessous.

- Coloured covers/  
Couverture de couleur
- Covers damaged/  
Couverture endommagée
- Covers restored and/or laminated/  
Couverture restaurée et/ou pelliculée
- Cover title missing/  
Le titre de couverture manque
- Coloured maps/  
Cartes géographiques en couleur
- Coloured ink (i.e. other than blue or black)/  
Encre de couleur (i.e. autre que bleue ou noire)
- Coloured plates and/or illustrations/  
Planches et/ou illustrations en couleur
- Bound with other material/  
Relié avec d'autres documents
- Tight binding may cause shadows or distortion along interior margin/  
La reliure serrée peut causer de l'ombre ou de la distorsion le long de la marge intérieure
- Blank leaves added during restoration may appear within the text. Whenever possible, these have been omitted from filming/  
Il se peut que certaines pages blanches ajoutées lors d'une restauration apparaissent dans le texte, mais, lorsque cela était possible, ces pages n'ont pas été filmées.

- Coloured pages/  
Pages de couleur
- Pages damaged/  
Pages endommagées
- Pages restored and/or laminated/  
Pages restaurées et/ou pelliculées
- Pages discoloured, stained or foxed/  
Pages décolorées, tachetées ou piquées
- Pages detached/  
Pages détachées
- Showthrough/  
Transparence
- Quality of print varies/  
Qualité inégale de l'impression
- Includes supplementary material/  
Comprend du matériel supplémentaire
- Only edition available/  
Seule édition disponible
- Pages wholly or partially obscured by errata slips, tissues, etc., have been refilmed to ensure the best possible image/  
Les pages totalement ou partiellement obscurcies par un feuillet d'errata, une pelure, etc., ont été filmées à nouveau de façon à obtenir la meilleure image possible.

- Additional comments:  
Commentaires supplémentaires:

[Printed ephemera] 1 sheet (verso blank)

This item is filmed at the reduction ratio checked below/  
Ce document est filmé au taux de réduction indiqué ci-dessous.

10X	14X	18X	22X	26X	30X
				✓	
12X	16X	20X	24X	28X	32X

The copy filmed here has been reproduced thanks to the generosity of:

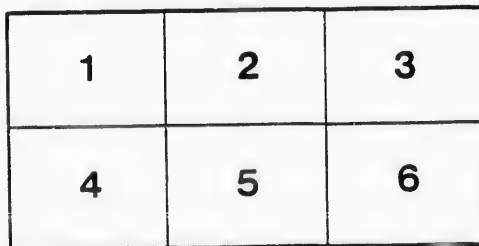
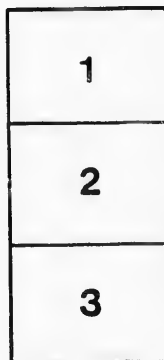
New Brunswick Museum  
Saint John

The images appearing here are the best quality possible considering the condition and legibility of the original copy and in keeping with the filming contract specifications.

Original copies in printed paper covers are filmed beginning with the front cover and ending on the last page with a printed or illustrated impression, or the back cover when appropriate. All other original copies are filmed beginning on the first page with a printed or illustrated impression, and ending on the last page with a printed or illustrated impression.

The last recorded frame on each microfiche shall contain the symbol  $\rightarrow$  (meaning "CONTINUED"), or the symbol  $\nabla$  (meaning "END"), whichever applies.

Maps, plates, charts, etc., may be filmed at different reduction ratios. Those too large to be entirely included in one exposure are filmed beginning in the upper left hand corner, left to right and top to bottom, as many frames as required. The following diagrams illustrate the method:



L'exemplaire filmé fut reproduit grâce à la générosité de:

New Brunswick Museum  
Saint John

Les images suivantes ont été reproduites avec le plus grand soin, compte tenu de la condition et de la netteté de l'exemplaire filmé, et en conformité avec les conditions du contrat de filmage.

Les exemplaires originaux dont la couverture en papier est imprimée sont filmés en commençant par le premier plat et en terminant soit par la dernière page qui comporte une empreinte d'impression ou d'illustration, soit par le second plat, selon le cas. Tous les autres exemplaires originaux sont filmés en commençant par la première page qui comporte une empreinte d'impression ou d'illustration et en terminant par la dernière page qui comporte une telle empreinte.

Un des symboles suivants apparaîtra sur la dernière image de chaque microfiche, selon le cas: le symbole  $\rightarrow$  signifie "A SUIVRE", le symbole  $\nabla$  signifie "FIN".

Les cartes, planches, tableaux, etc., peuvent être filmés à des taux de réduction différents. Lorsque le document est trop grand pour être reproduit en un seul cliché, il est filmé à partir de l'angle supérieur gauche, de gauche à droite, et de haut en bas, en prenant le nombre d'images nécessaire. Les diagrammes suivants illustrent la méthode.

# MECHANICS' INSTITUTE.

Monday, Tuesday, Wednesday, and Thursday  
EVENINGS, MAY 6th, 7th, 8th, AND 9th.

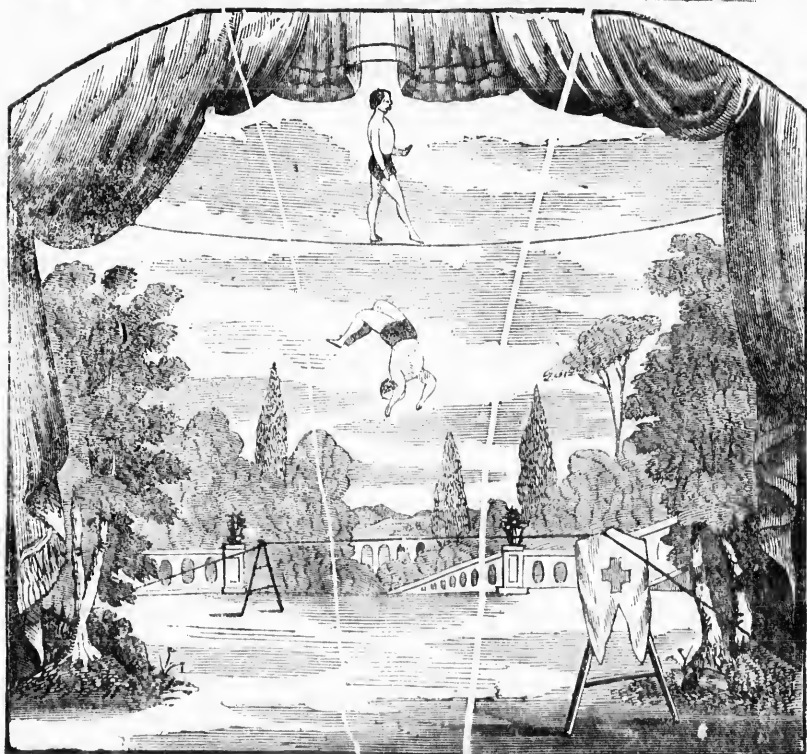
## WONDERFUL PERFORMANCES OF **Mr. JOHN DENIER!**

LATE OF THE RENOWNED RAVELS,  
CHAMPION GYMNAST, AND TIGHT ROPE ARTIST.

Engagement of Mons. Fillebrown,  
WHO WILL APPEAR IN HIS GREAT CHARACTER OF  
GROS PIERE in the Pantomime of PONGO.

## **HENRI DENIER,** LEGERDEMAIN, ARTIST, MAGICIAN, &C.

ENGAGEMENT OF THE  
**ST. JOHN BRIGADE BAND.**



It is not in the Province of a circular to enumerate or give justice to any adequate description of the astonishing performance of the DENIER BROTHERS which are of the most varied and novel character. Until the arrival of the Denier Brothers, nothing of the kind has ever been witnessed in this country.

The performances are unique in character, and of the most chaste and elegant description, strictly moral and pleasing in character. Entirely different from any Entertainment which has ever visited this country.

THE DENIER BROTHERS will appear in all their most wonderful and daring Acts, as performed by them at the Cremorn Gardens, (London,) and principal Theatres in the United States.

Extensive arrangements are being made to render the entertainment the most brilliant ever witnessed in St. John.

During their stay, the Denier Brothers will nightly produce performances of the most astonishing description.

**INCREDIBLE FEATS WITNESSED WITH WONDER AND AMAZEMENT.**

First night will be produced, The Great

# CATARACT ASCENSION

The most Marvellous Exploit of the Age!

The Terrific Ascent will be made by Mons. DENIER, enveloped in a Sack, Blindfolded.

**ATTRACTIONS OF THE MOST VARIED CHARACTER**

Extensive arrangements are being made to render the entertainment the most brilliant ever witnessed in St. John.  
During their stay, the Denier Brothers will nightly produce performances of the most astonishing description.  
**INCREDIBLE FEATS WITNESSED WITH WONDER AND AMAZEMENT.**

First night will be produced, The Great

# CATARACT ASCENSION

The most Marvellous Exploit of the Age!

The Terrific Ascent will be made by Mons. DENIER, enveloped in a Sack, Blindfolded.

**ATTRACTIONS OF THE MOST VARIED CHARACTER!**

Amusing scenes, incredible feats, daring acts, laughable performances—produced to-night.

**PARTICULAR NOTICE.—THE GRAND MID AIR ROPE ASCENSION!**

From the extreme back of the stage to the gallery entrance, will take place at precisely 8½ o'clock.

**PROGRAMME FOR THE EVENING.**

## Part First.

Overture by the Orchestra—Opening with scenes of Legerdemain & Magic, by MONS. HENRI DENIER.

## Part Second.

Will be produced, with all its startling effects and imposing appointments,

### THE GRAND MID AIR ROPE ASCENSION,

By JOHN DENIER. The Great Aerial Flight will be made upon a single cord, at a lofty and dizzy height stretched from the back of the stage to the gallery entrance, passing far above the heads of the audience.

The daring and unparalleled spectacle of

### LES HOMMES ARRIES, OR THE MAN OF AIR!

Wonderful repose of the Man of Air upon the rope, lying full length upon the rope, appearing as if suspended in the air.

Incredible Feat—Startling and daring performance,

### The Great Wheelbarrow Act!

The daring performer will wheel a Wheelbarrow the entire length of the rope.

## Part Third,

Second appearance of Mons. HENRI DENIER—Amusing Divertissement—A scene of Laughter and Fun.

## Part Fourth.

Astonishing feats upon the Cord Vendue—Brilliant Tight Rope Performance—Tight Rope Dancing—Vaulting—Leaping—Evolutions, &c.

## PART FIFTH,

Grand Divertissement, Scenes in Magic and Slight of Hand, Necromancy, &c., by Mons. Henri Denier.

## PART SIXTH,

### BEAUTIFUL AND GRACEFUL PERFORMANCE OF LA BARRE SEULE!

Astonishing Feats upon the Aerial Bar, a scene of most exquisite grace and beauty. On the occasion of Mr. Denier's Benefit at the Academy of Music, Boston, the Boston press, without exception, pronounced it to be without parallel.

## PART SEVENTH.

Acts of Legerdemain, . . . . . By Mons. Denier.

## PART EIGHTH.

Performance Extraordinary—The Crowning Feature of the Evening,

### THE WONDERFUL PERFORMANCE OF EL TRAPEZO!

Terminating with the Great Drop Act of Eshelle Trapeze, performed at a lofty height from the stage, with such rapidity the eye can scarcely follow the movements, filling the beholder with wonder and amazement. Lying across a bar suspended from the ceiling upon his back, the daring performer suddenly slides head downward, apparently to be dashed to pieces below; an instant thrill prevails, which is drowned in shouts of applause as he catches by his heels only, and is instantly seated upon the bar.

## Part 9th

The Evening's Entertainment will conclude with the Laughable Pantomime of

### PONGO, THE INTELLIGENT APE.

Man Monkey, JOHN DENIER.

Gros Pierre, the Clown, MONS. FILLEBROWN.

Due notice will be given of the production of

### LA BARTON PERILLEUSE,

AND THE PANTOMIME OF

### THE RED GNOME.

The Grand Cataract Ascension across the Falls at Suspension Bridge will take place as soon as a sufficient sum can be raised to defray expenses of putting up the rope.

Tickets can be obtained at the Book Stores, and at the door. Doors open at 7-12, commence at 8 1-4. Price of admission 25 cents.

Geo. W. Day, Printer.

W. W. WARREN, Manager.

